



Installation Guide

Version 1.1
April 2009

©PacketVideo Corporation
<http://www.twonkymedia.com>

Table of Contents

Table of Contents	2
1 Introduction	3
1.1 Installation	3
1.2 About this Manual	3
1.3 Feedback and Technical Support	3
2 Windows XP / Vista Setup	4
3 Further Configuration	7

1 Introduction

TwonkyMedia™ manager is media management software and a UPnP/DLNA media server that enables you to share all your music, photos and videos with UPnP-enabled digital media players throughout your home.

1.1 *Installation*

This installation guide describes how to install TwonkyMedia manager on Windows® XP and Windows® Vista.

1.2 *About this Manual*

This manual will help you to install TwonkyMedia manager on your PC. Additional information about setup and configuration of TwonkyMedia can be found in the Help section of TwonkyMedia manager. Click on the Question mark to view the Help files. Additional information can be found online in our FAQ at <http://www.twonkymedia.com/ask.html> or our Forum at <http://www.twonkyforum.com/>.

1.3 *Feedback and Technical Support*

If you require technical support, please contact our support department at www.twonkymedia.com/contact_support.html.

We also appreciate any comments or feedback you might have regarding this, or other TwonkyMedia products. Please send these comments to tmm-beta@pv.com.

2 Windows XP / Vista Setup

If you have installed an earlier version of TwonkyMedia server or TwonkyMedia manager, you should first uninstall it through the Start menu:

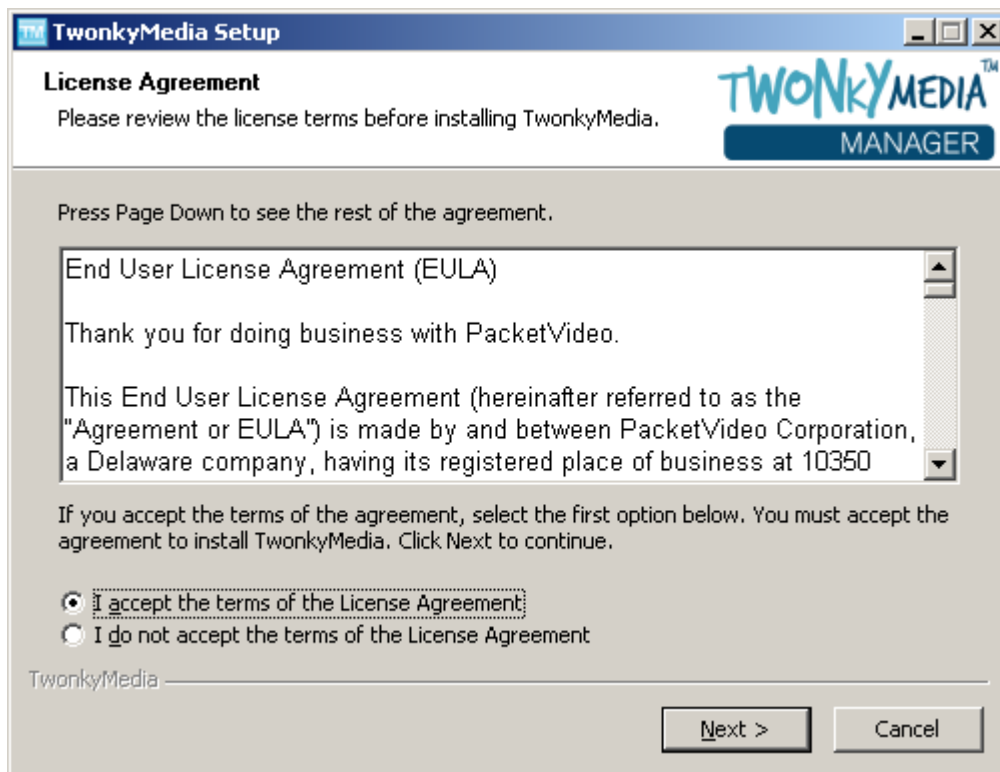
Start → Control Panel → Add/Remove programs

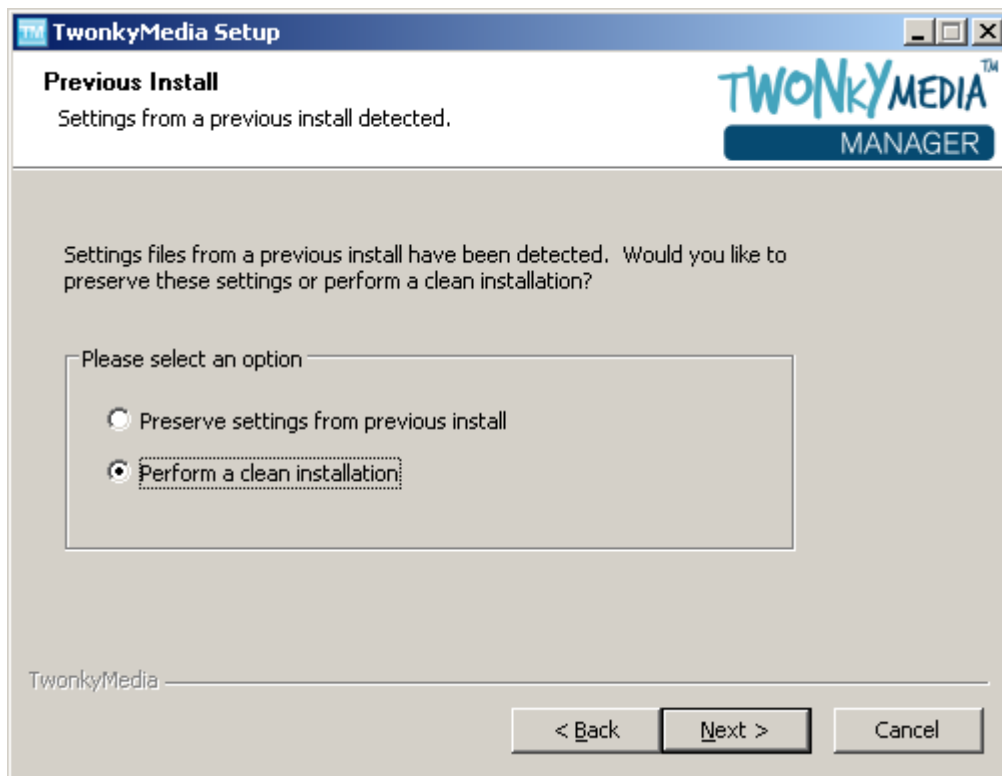
To install TwonkyMedia manager, run the program called TwonkyMediaManagerSetup and press Install.

First the installation language has to be selected. This is not only relevant for the installation process, but will also define the language used for the TwonkyMedia manager configuration pages and the navigation tree shown on your digital media players.

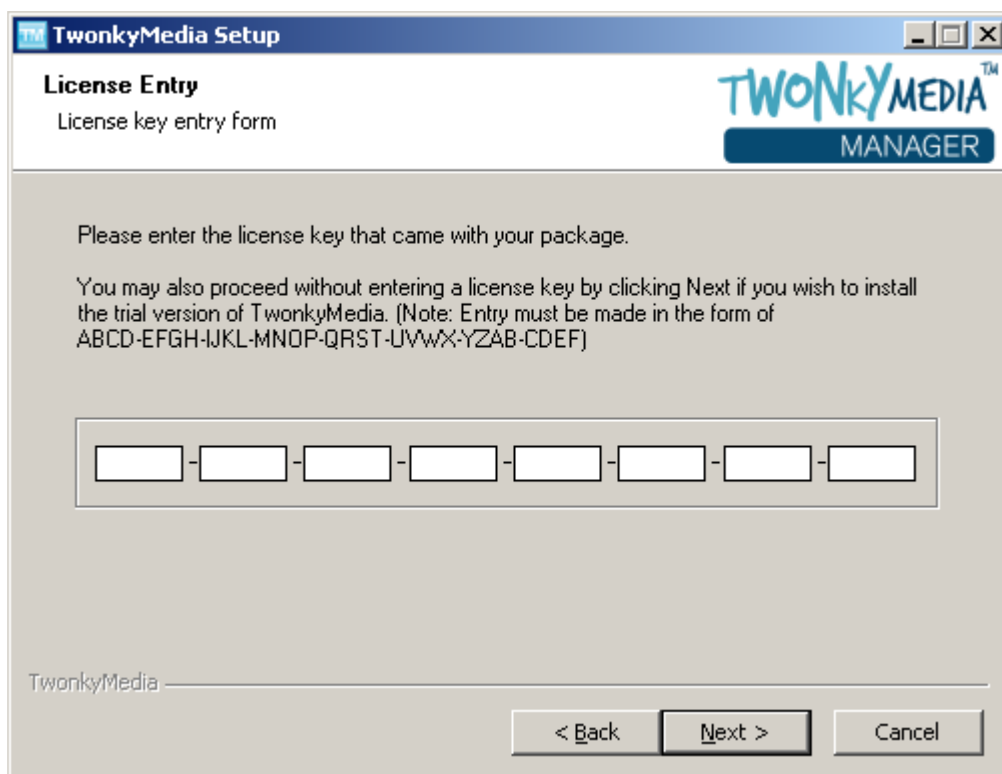


Next, you have to accept the end user license agreement. The software will not be installed if you do not agree with the license terms.

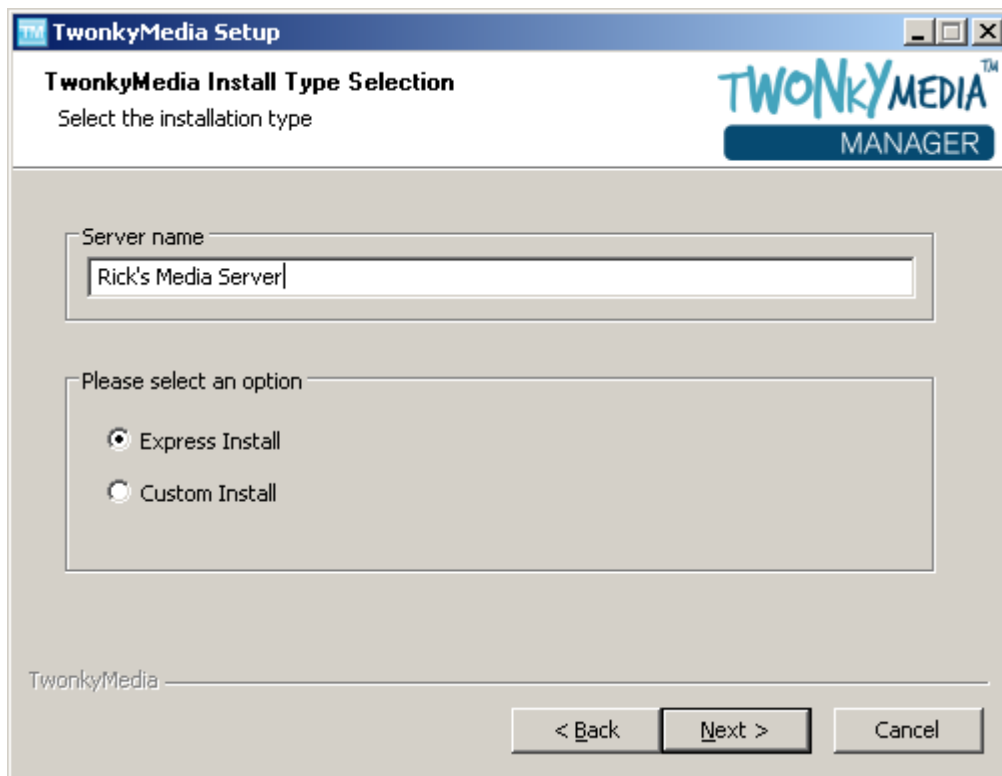




If it's the first time you're installing TwonkyMedia manager, or you have selected the clean installation option, you will be asked to enter a license key, which was provided with this product. Please keep this in a safe place for future reference.

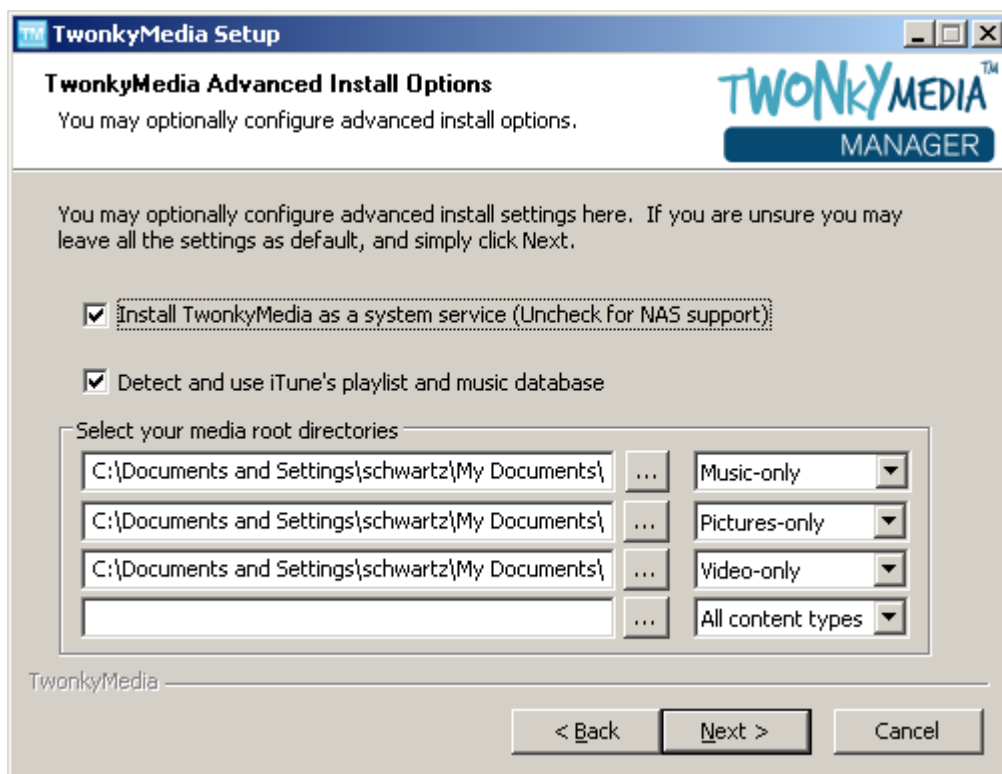


When preserving settings from a previous installation, the license key will automatically be retrieved so you won't have to enter it again. If you are upgrading from TwonkyMedia manager v1.0 to v1.1, it's recommended that you perform a clean installation.

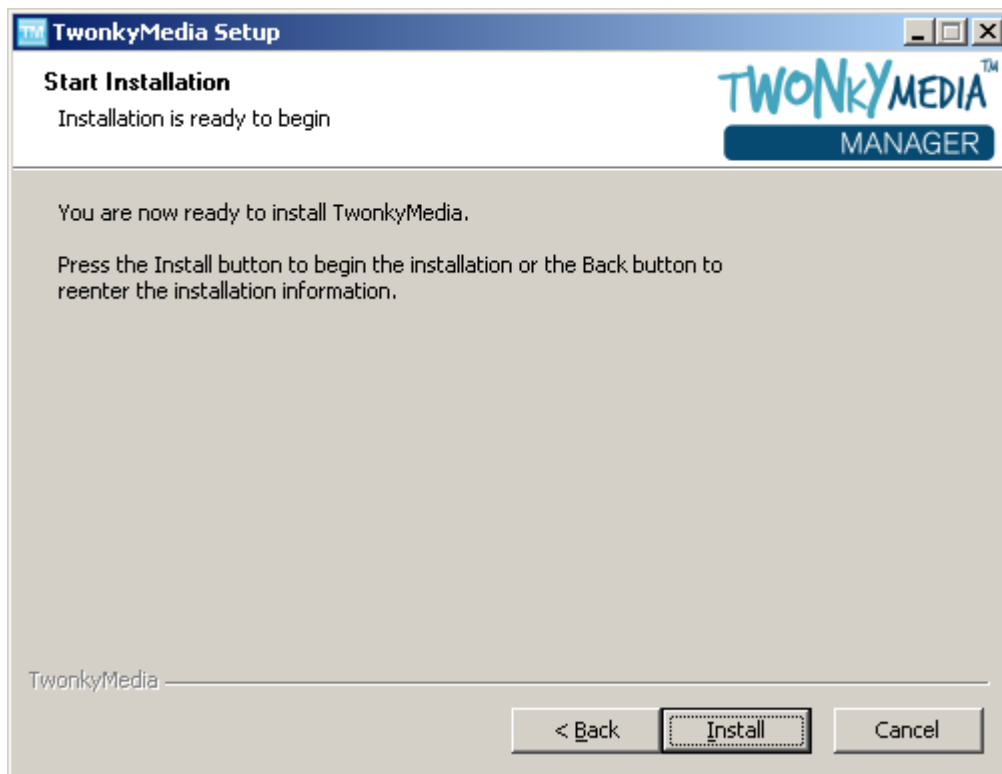


Next, you need to enter a name for your media server and decide whether you want Express or Custom install. You can use Express Install unless you need to do one of the following:

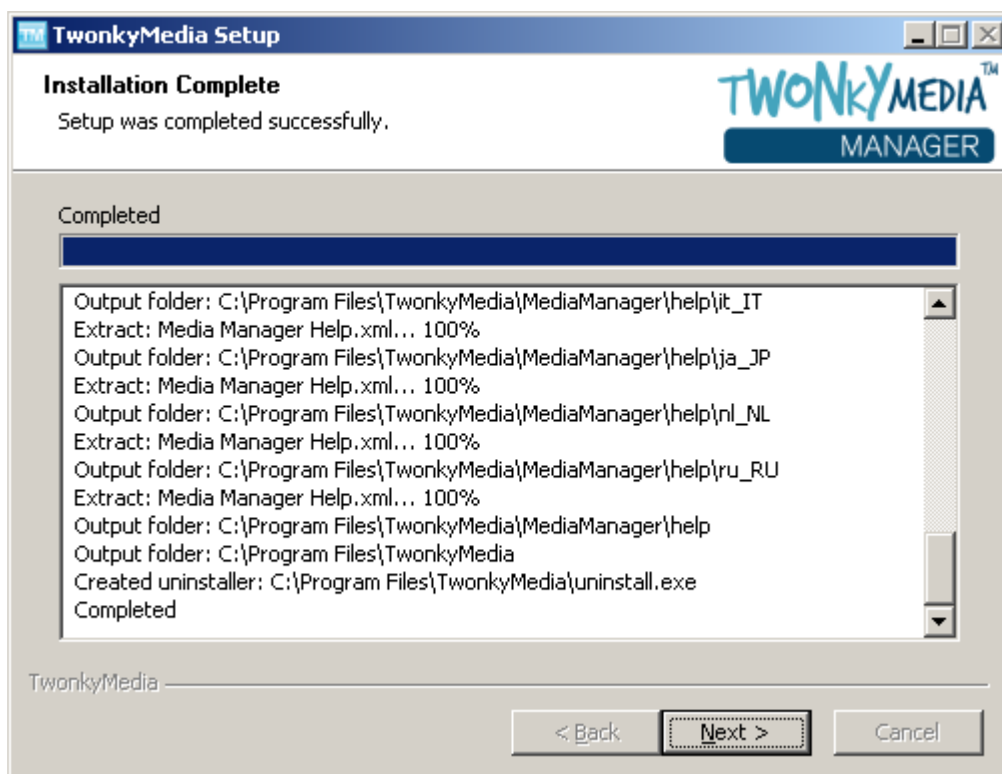
- Configure TwonkyMedia server for use with network storage
- Bypass iTunes® import
- Set different file paths for your media



Press Next to continue. You are now ready to install TwonkyMedia manager.



Press Install to start installation. Please be patient, during the installation process we scan your entire hard disk to locate your iTunes library and playlists. This can sometimes take five minutes or more to complete. Please do not cancel this process.



Press Next to proceed.



TwonkyMedia server is automatically started, so it is ready to serve your media throughout your home. To launch TwonkyMedia manager, click on the desktop shortcut.

The first time TwonkyMedia manager runs it will scan your entire hard disk for music, photos and video. This process normally takes 5-10 minutes. During this time, the TwonkyMedia manager application will be less responsive than usual. For this reason, it's best to wait until the scanning process has completed before using TwonkyMedia manager.

3 Further Configuration

After scanning your hard disk, TwonkyMedia manager should display music, photos and video. If you don't see any media when you open TwonkyMedia manager. Go to the Server Settings page and make sure the Content Paths point to folders that contain media.

Next, you should right-click on all of the icons that appear in the Play Here section and name and assign icons to all of your devices.

It's also a good idea to go to the Media Feed settings page and enter your account names for Flickr™, Photobucket and YouTube™. You should also check the types of feeds you're interested in. You can view these feeds on your external devices, or by clicking on the Folder view icon in the Music, Photo and Video screens.

Make sure to regularly check for updates by going to the General Settings page and clicking on the Check for Update button.