



Installation Guide

**Version 1.3
February 2010**

©PacketVideo Corporation
<http://www.twonkymedia.com>

Introduction

TwonkyMedia™ manager is media management software that enables you to share all your music, photos and videos with UPnP or DLNA-compatible digital media players throughout your home.

About this Guide

This guide will help you to install TwonkyMedia manager on your Windows PC. Additional information about setup and configuration of TwonkyMedia can be found in the Help section of TwonkyMedia manager. Click on the Question mark to view the Help files. Additional information can be found online in our FAQ at <http://www.twonkymedia.com/ask.html> or our Forum at <http://www.twonkyforum.com/>.

Feedback and Technical Support

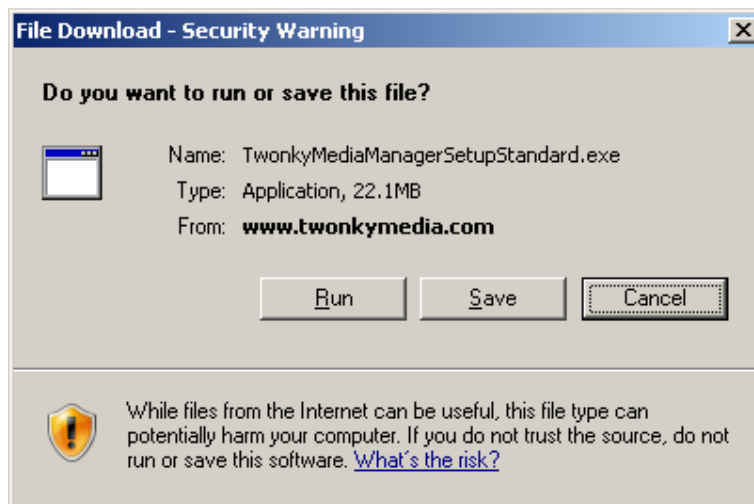
If you require technical support, please contact our support department at <http://twonkymedia.com/ContactUs.aspx>.

We also appreciate any comments or feedback you might have regarding this, or other TwonkyMedia products. Please send these comments to tmm-beta@pv.com.

Installation on a Windows PC

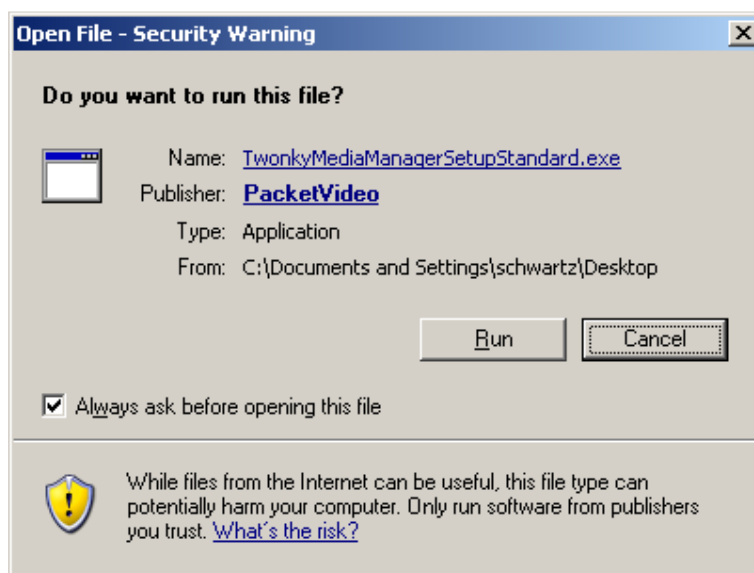
Before installing TwonkyMedia manager, you need to download it from our website at www.twonkymedia.com or locate the TwonkyMedia manager CD-ROM that came with your device.

If you're downloading it from our site, make sure to click the save button and save a copy of the installer on your desktop.

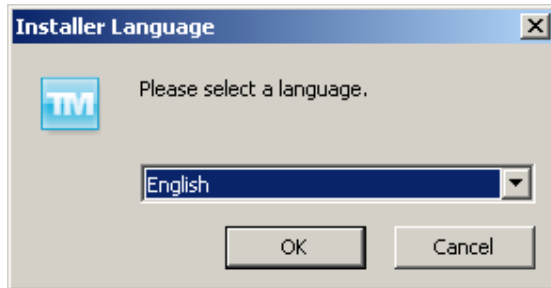


After the download is complete, locate the downloaded copy of TwonkyMedia manager on your desktop or CD-ROM. Next, double-click on the file called TwonkyMediaManagerSetupStandard.exe and press Install.

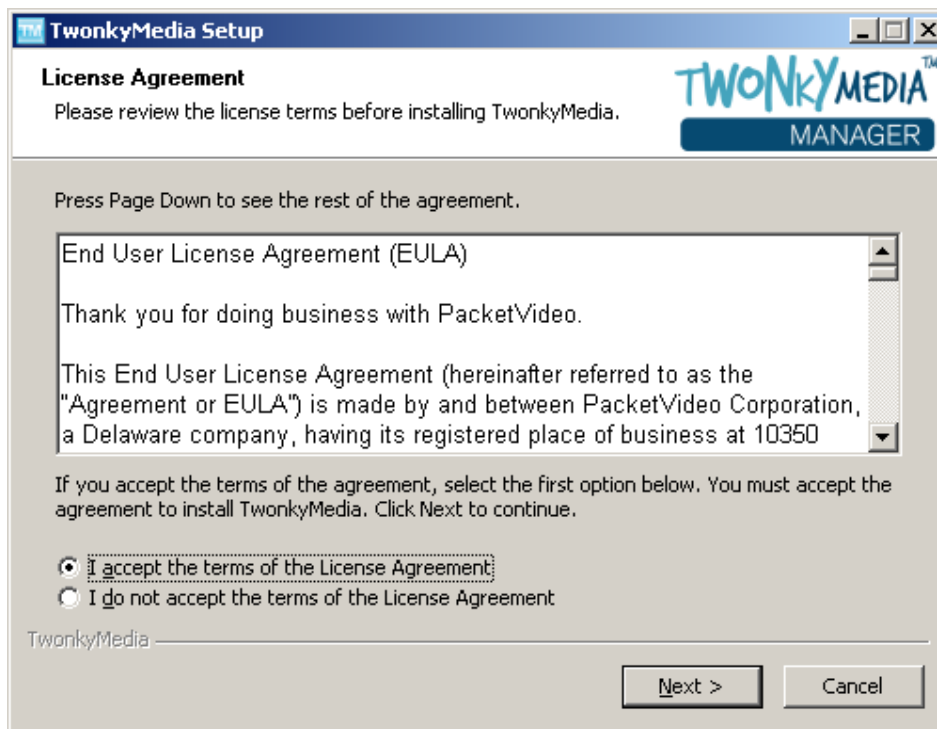
In most cases, you'll see a security warning like the one below. Click on Run to proceed.



You need to first select the language you want to use. This language is used in the installer and the TwonkyMedia manager application.



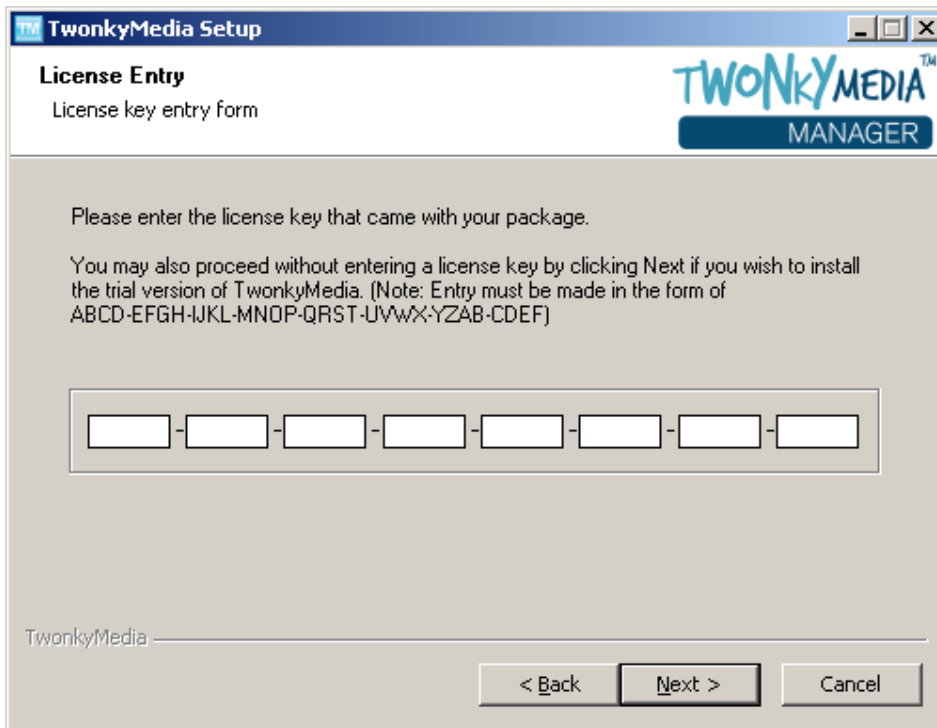
Next, you have to accept our end user license agreement. The software will not be installed if you do not agree with our license terms. To agree, click on “I accept the terms of the License Agreement” and press Next.



If it's the first time you are installing TwonkyMedia manager, or you have selected the clean installation option, you will be asked to enter a license key, which was provided with this product.

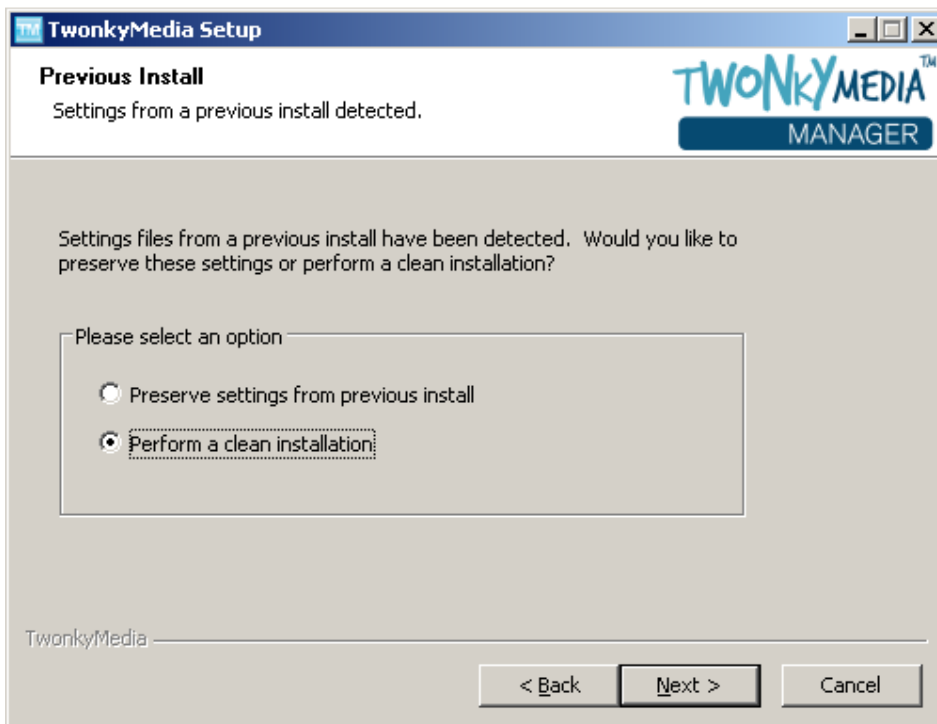
Important: Please store your license key in a safe place for future reference. You will need it if you ever need to reinstall this product or upgrade to a new version of this software.

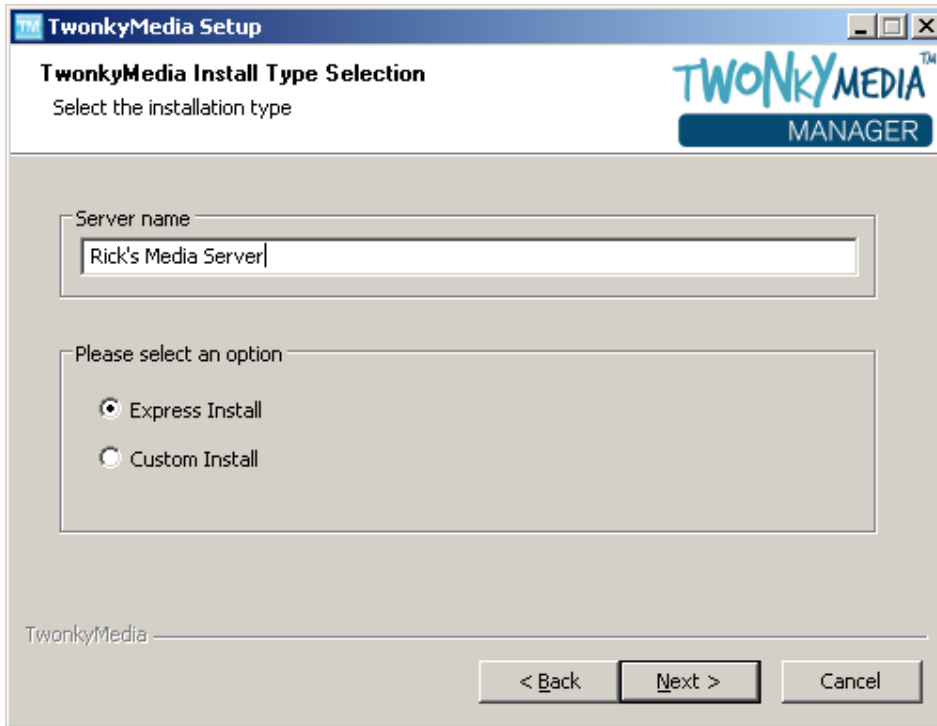
If you are upgrading from a previous version and want to preserve your settings, please skip to the diagram titled “Previous Install” on the next page.



If you are upgrading from a previous version and want to preserve your settings, press the Next button.

When preserving settings from a previous installation, the license key will automatically be retrieved so you won't have to enter it again. If you are upgrading from an earlier version of TwonkyMedia manager, it is recommended that you perform a clean installation.

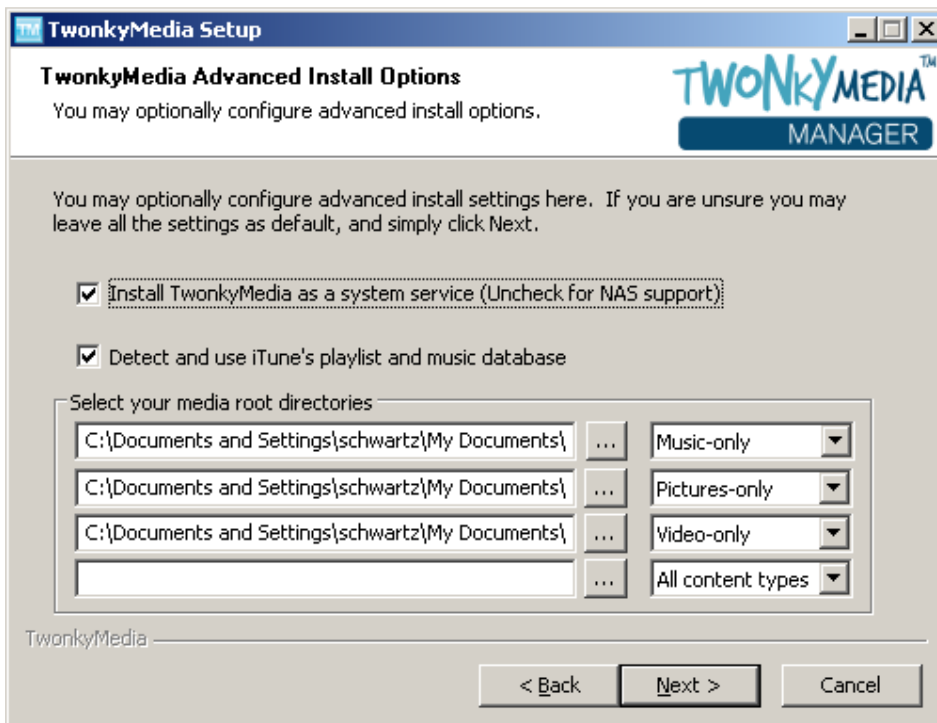




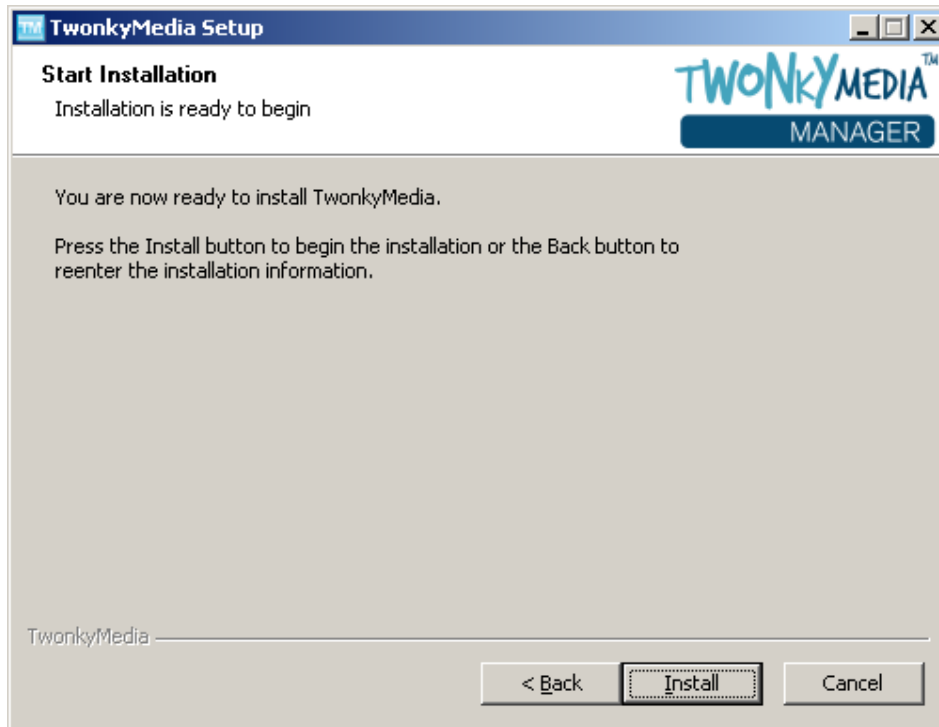
Next, you need to enter a name for your media server and decide whether you want Express or Custom install. You should select Express Install -- unless you need to:

- Configure TwonkyMedia server for use with a network storage device or NAS
- Bypass iTunes® import
- Set different file paths for your media

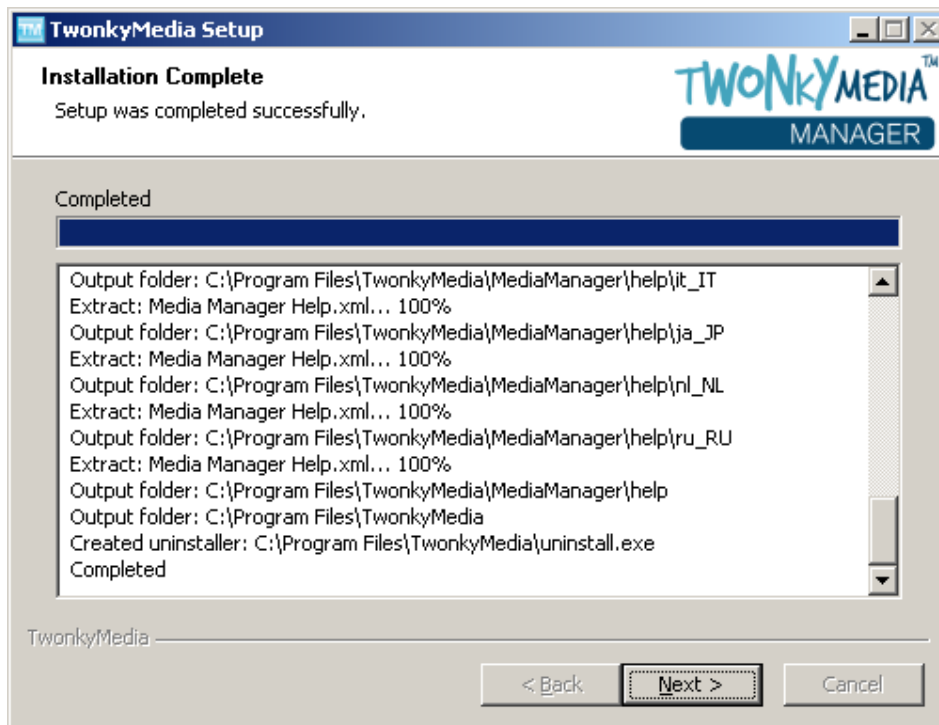
If you select Express Install, you should jump to the instructions on the next page.



You are now ready to install TwonkyMedia manager. Press Next to continue.

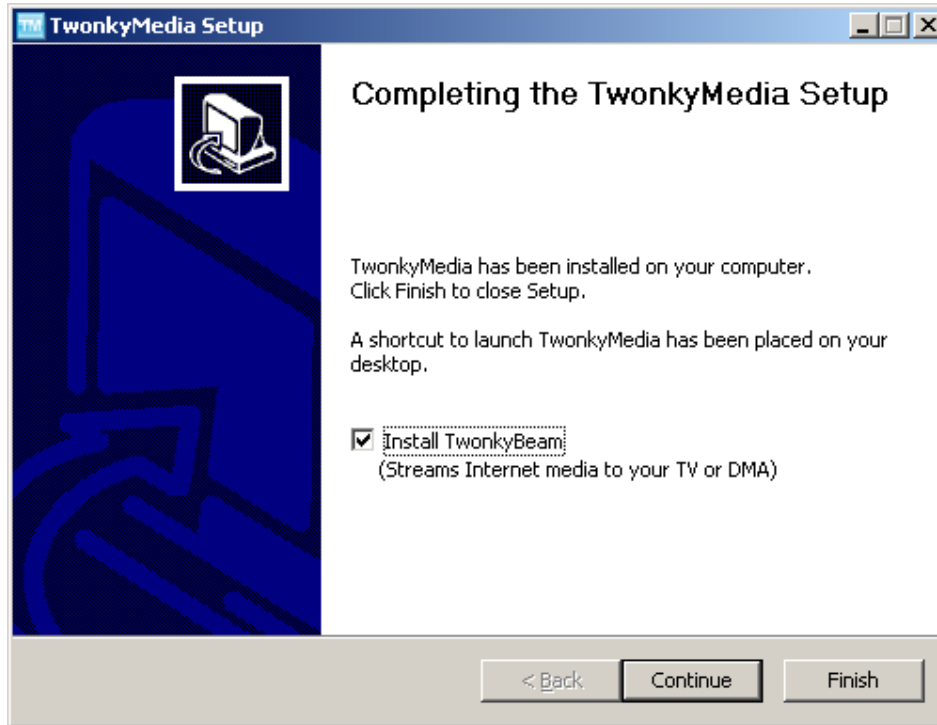


Press Install to start installation. Please be patient, during the installation process. The installer scans your entire hard disk to locate your iTunes library and playlists. This process can take a few minutes. During this time, the progress indicator, may appear to stop, but the installer is still working.



Press Next to proceed.

Although TwonkyMedia manager has been successfully installed, you may be asked if you want to install special software called TwonkyBeam. This software is not required to use TwonkyMedia manager, but is recommended if you want to stream media from the Internet to devices in your home.



Follow the onscreen directions to install TwonkyBeam. For instructions of using TwonkyBeam you can visit our website. <http://www.twonkymedia.com/beam/help.html>

How to Launch TwonkyMedia Manager

After the installer finishes, TwonkyMedia server is automatically started, so it is ready to serve your media to devices throughout your home.

To launch TwonkyMedia manager, click on the desktop shortcut.

The first time TwonkyMedia manager runs it will scan your entire hard disk for music, photos and video. This process normally takes a few minutes. During this time, TwonkyMedia manager will be less responsive than usual. For this reason, it's best to wait until the scanning process has completed before using TwonkyMedia manager.

Further Configuration

After scanning your hard disk, TwonkyMedia manager should display music, photos and video located in your shared media folders. If you don't see any media when you open TwonkyMedia manager. Go to the Server Settings page and make sure the Content Paths point to folders that contain media.

Next, you should right-click on all of the icons that appear in the Play Here section and name and assign icons to all of your devices.

It's also a good idea to go to the Media Feed settings page and enter your account names for Flickr™, Photobucket and YouTube™. You should also check the types of feeds you're interested in. You can view these feeds on your external devices, or by clicking on the Folder view icon in the Music, Photo and Video screens.

Make sure to regularly check for updates by going to the General Settings page and clicking on the Check for Update button.